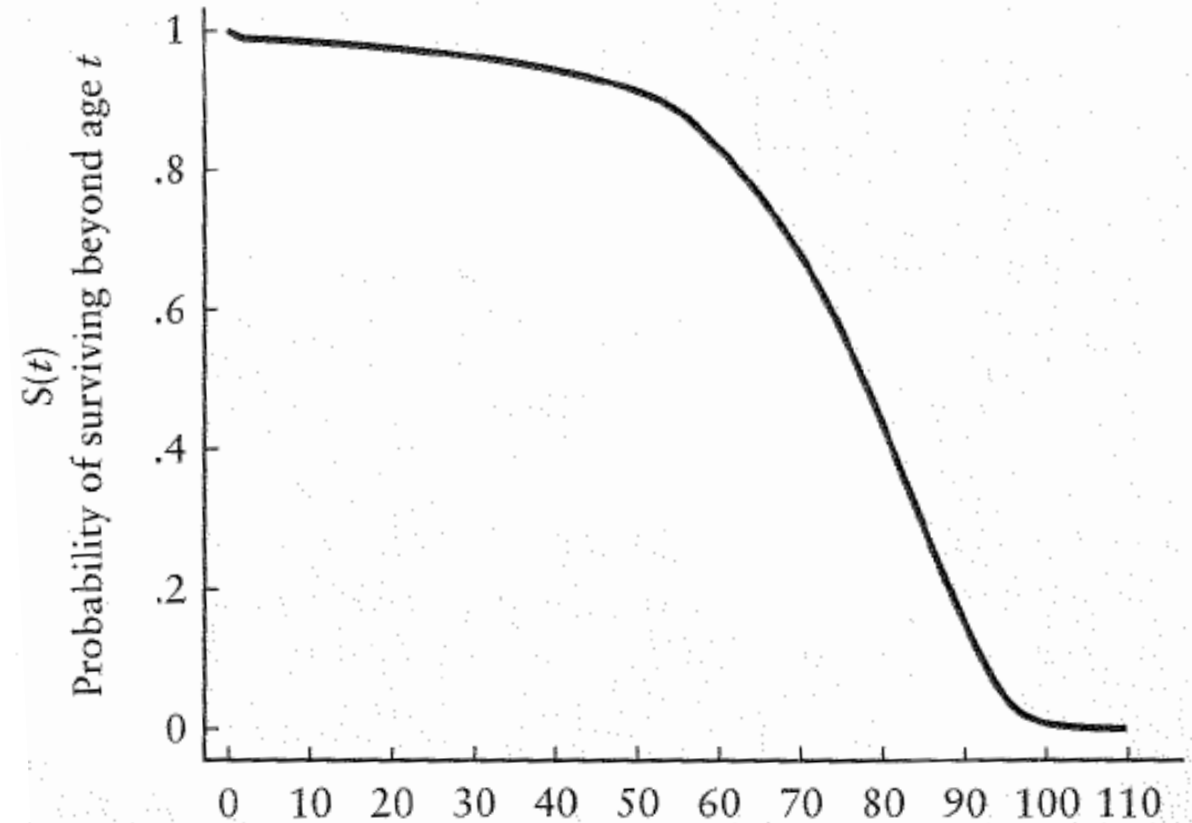


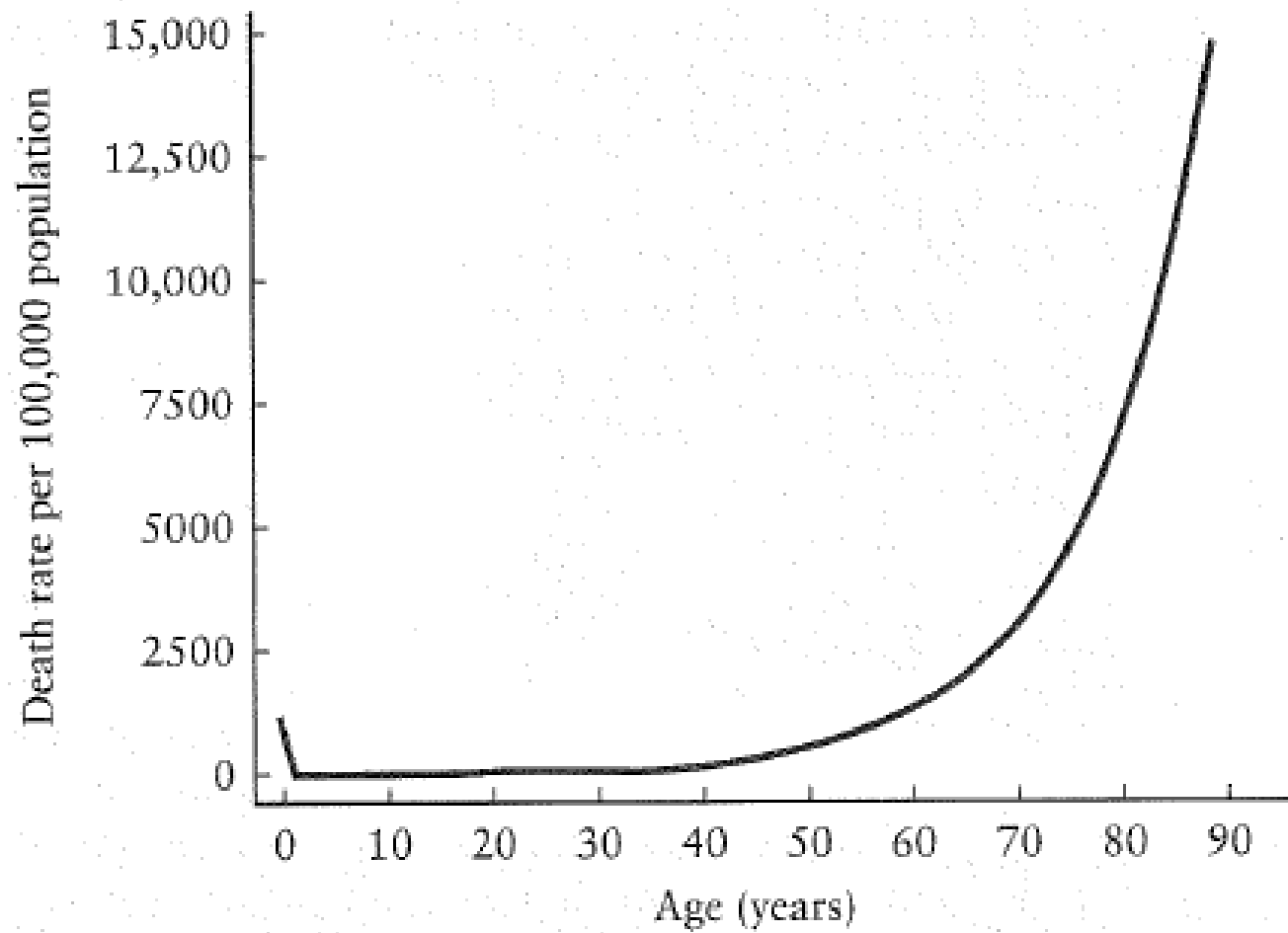
TABLE 21.1

Complete United States life table for individuals less than 30 years of age, 1979-1981

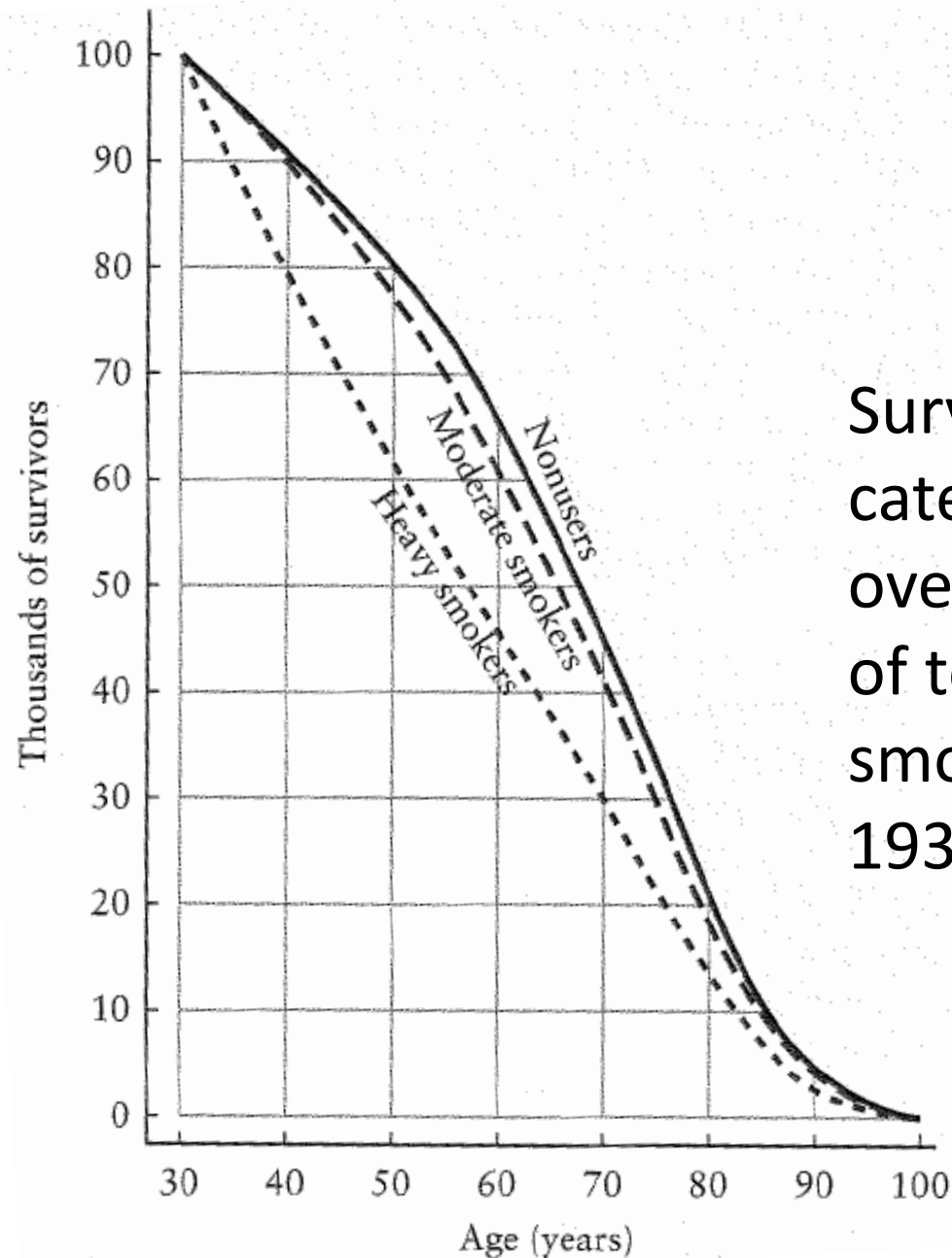
t to $t + n$	${}_nq_t$	l_t	$S(t)$
0-1	0.01260	100,000	1.0000
1-2	0.00093	98,740	0.9874
2-3	0.00065	98,648	0.9865
3-4	0.00050	98,584	0.9858
4-5	0.00040	98,535	0.9854
5-6	0.00037	98,495	0.9850
6-7	0.00033	98,459	0.9846
7-8	0.00030	98,426	0.9843
8-9	0.00027	98,396	0.9840
9-10	0.00023	98,370	0.9837
10-11	0.00020	98,347	0.9835
11-12	0.00019	98,328	0.9833
12-13	0.00025	98,309	0.9831
13-14	0.00037	98,285	0.9829
14-15	0.00053	98,248	0.9825
15-16	0.00069	98,196	0.9820
16-17	0.00083	98,129	0.9813
17-18	0.00095	98,047	0.9805
18-19	0.00105	97,953	0.9795
19-20	0.00112	97,851	0.9785
20-21	0.00120	97,741	0.9774
21-22	0.00127	97,623	0.9762
22-23	0.00132	97,499	0.9750
23-24	0.00134	97,370	0.9737
24-25	0.00133	97,240	0.9724
25-26	0.00132	97,110	0.9711
26-27	0.00131	96,982	0.9698
27-28	0.00130	96,856	0.9686
28-29	0.00130	96,730	0.9673
29-30	0.00131	96,604	0.9660



Survival curve for the US population, 1979-1981



Age-specific death rates from birth until 90 for the US population
1979-1981



Survival curves for three categories of white males over 30 years old: Nonusers of tobacco, moderate smokers, and heavy smokers, 1938